



# Camp Saint Andrews

July 18<sup>th</sup> – 24<sup>th</sup>, 2010

Archery  
Arts & Crafts  
Hiking  
Nature  
Sports  
Campfires  
Rock Climbing  
Rappelling  
Ropes Course  
Dancing  
Quiet Games  
Swimming  
Chapel  
Singing  
Camp Saint  
Andrews Scarf  
Society



[WWW.CAMPSAINTANDREWS.ORG](http://WWW.CAMPSAINTANDREWS.ORG)

## Where

Our camp location is nestled in the heart of the Sierra Nevada Mountains, at a place where granite masses and thick conifer forests preside on a mountain face. The facility lies one mile above the Dardanelles at 6,000 feet in elevation. A perfect location to serve as a high sierra summer camp adventure, Camp Saint Andrews San Bruno prides itself on its ability to bring out the beauty in all who attend, creating memories, stories, lifelong friends, wilderness awareness and the urge to re-live it again and again for years to come.



Note: Buses to camp leave from both San Bruno and Oakdale.

## Health And Safety

All meals and snacks will be provided and prepared by the resident camp staff.

A certified Medic is in camp. This is in addition to a Lifeguard who is certified for waterfront safety and program.

## Housing



Children will sleep in cabins holding six to ten campers, with a minimum of one Counselor, and one Counselor-In-Training. *Each person attending must supply his/her own sleeping bag and/or bedding.*

## How to Apply

Registration can be done on the camp website at [www.campsaintandrews.org](http://www.campsaintandrews.org) and by following the link to the registration page

OR

Return the completed registration form and appropriate fees (checks payable to Camp St. Andrews) in an envelope to:

**Camp Saint Andrews Attn: Registrar**  
P.O. Box 1555, Millbrae, CA. 94030

## Questions about Camp?

Ask a Camp Mom! Call Ana at 925-522-8672

Following the receipt of your registration and fee, you will be sent authorization forms and a confirmation letter or you can download & print your forms from the forms page at



[www.campsaintandrews.org](http://www.campsaintandrews.org).

## Cost

(7 days, 6 nights)

### Registration Fees: (Non-refundable)

### Staff Application Fee: (Refundable)

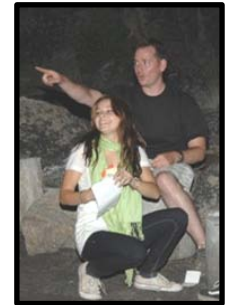
Super Early Fee received before 01/01/10 .. \$20  
Early Fee received before 03/01/10 ..... \$40  
Standard Fee received before 05/01/10 .... \$60  
Late Fee received after 05/01/10 ..... \$80

### Camp Fees:

Camper (8 – 13 yrs) ..... \$350  
Program Aid (14 – 15yrs) ..... \$265\*  
Counselor-In-Training (16 – 17yrs)..... \$195\*  
Counselor\*\* (18+) ..... \$145\*  
Program Staff / Unit Director (21+)..... \$145\*

(Total fees for camp are Registration fee + Camp Fees. e.g. Total fees for a Camper registered prior to 03/01/10 would be \$390; registered after 05/01/10, total fees would be \$430) These costs include Food & Lodging, Camp Photo, Canteen Snacks, Program materials, Bus transportation, Insurance, and Training (\*training for staff members)

\*\*Counselor fees may be subsidized by The Diocese of



California. If this happens Counselors will receive a partial fees refund after camp, contact the Director or Treasurer for details.

## Financial Aid

If you are requesting financial aid, financial aid forms will be sent to you or can be downloaded & printed from [www.campsaintandrews.org](http://www.campsaintandrews.org). *Financial aid requests will not be processed without a completed registration form and registration fee submitted.* If you are eligible for financial aid, you will be notified as soon as possible as to the amount of aid you will receive. Grants for “camperships” are limited and will be given until the allotment of funds has been dispersed. Financial aid is designed to supplement camp fees, and each recipient will be required to pay a minimum. Financial aid forms must be completed and returned by May 1<sup>st</sup>, 2010. Questions about aid should be directed to the Camp Treasurer at [treasurer@campsaintandrews.org](mailto:treasurer@campsaintandrews.org) or to Brig at (209) 523-6841.

